

The State of Oregon

Total Types and Towns: 477



The SEASIDE is a 2.4574, and the Newberg (reduced) is a 4.4544 with the contemporary double oval.

The state is often spelled in full, but normally abbreviated OREG, unless listed (ie: ORE, OR)

At this time, this is the only Type with the PIC Type Note, in the listings.

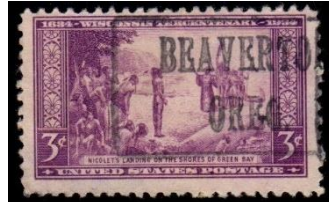


HALSEY / [ZIP] / OREGON 7.410005

The following are examples of different styles found from Oregon towns, with type numbers.



2.16



2.4214



2.425



2.4263



CANBY 2.428



2.4283 CON



2.45



2.4574



2.4593



2.4646 CON



2.465



2.4664



2.467



2.5644



2.625



2.64(5/9)



2.6*5(64/44)



2.65



2.66



4.4113



4.4154



4.4274



4.4283



4.4644 and another variety



ORE.



4.4614



4.4643



4.46434



4.5153



7.4542

OREGON Jan 1 2019

Type	Note	Town	Note	Usage
2.64(54/64)		ADA		1954
4.4154		ADAMS		1922, 23, 32
0.4644		AGNESS		1938
2.4556		ALBANY		1917
2.4564		ALBANY		1908, 14, 17, 19
4.4154		ALBANY		1922, 26, 29, 32
4.4543		ALBANY		1917, 19, 23
7.4543		ALBANY		1917, 19
2.46	CON	ALSEA,		1954
2.4263		ARLINGTON,		1938
2.4646	CON	ARLINGTON,		1954
4.4274		ASHLAND / ORE.		1932
2.4563		ASTORIA		1913
2.46	CON	ASTORIA,		1938, 54
2.467		ASTORIA,		1954
2.46	CON	AUMSVILLE,		1954
2.4664		AURORA		1938
4.4274		AURORA / ORE.		1938
0.46641		BAKER	CQ	1917
4.4253		BAKER		1926, 32, 34
4.4293		BAKER		1922, 26, 32
1.2173		BAKER		1917
4.4153		BAKER,		1917, 22, 23, 26
4.4274		BANDON / ORE.		1926, 31, 32
2.465		BANDON		1917, 22
2.46		BANDON,		1938, 48
2.4664		BANDON,		1926, 31, 36
4.4293		BANKS		1922, 23, 26, 38
2.515		BATES		1938
2.4653		BAY CITY,		1938
2.46	CON	BAY CITY,		1954
2.464405		BEAVERCREEK, / OR		1979
2.64(54/94)		BEAVERCREEK		1948, 54, 61
2.421		BEAVERTON		1922, 26, 32, 34
4.4153		BEAVERTON,		1926
1.2263		BEND,		1938
4.4154		BEND		1917, 21, 23, 26
4.4543		BEND		1916, 17
4.4563		BEND		1917, 22
2.46		BONANZA	CQ	1938
2.4663		BONANZA,		1926, 38

2.4664		BORING		1926, 40
2.46954		BORING	CQ	1938
0.46		BORING,		1938
2.4214		BROOKINGS,		1922, 26
2.465	CON	BROOKINGS		1922
1.1143		BROOKINGS,		1950
2.460005		BROOKINGS, / OR		1967
1.4264		BROOKS / ORE.		1913
2.56		BROWNSVILLE		1959
2.64(5/9)		BROWNSVILLE		1938
2.4252		BROWNSVILLE,		1922, 38
4.4154		BURNS		1922
1.1542	ASF	BUTTE FALLS, OREGON		1912
2.460005		CAMAS VALLEY, / OR		1968
2.428		CANBY	CQ	1926, 30, 32
2.426		CANBY,		1937
2.4664		CANBY,		1922, 26, 31
1.2556	ASF	CANBY, ORE(GON)		1926
2.46	CON	CANYON CITY		1954
4.4153		CANYON CITY		1922, 26, 32, 33
2.4243		CANYON CITY,		1938
2.4214		CANYON CITY,		1926, 34
2.64(5/9)		CARLTON		1938
2.669		CARLTON		1938
2.64(5/9)		CENTRAL POINT		1956
4.4543		CENTRAL POINT		1922, 36
4.4643		CENTRAL POINT		1926
2.46	CON	CLATSKANIE	CQ	1938
4.4154		CLATSKANIE		1917, 19, 26
4.4154		COCHRAN		1926
1.157	ASF	CONDON, OREG(ON)		1921
2.4664		CONDON, / ORE.		1954
2.425		CORNELIUS		1921
2.46		CORNELIUS,		1926, 32, 38
2.627		CORNELIUS,		1938
2.4514		CORVALLIS		1917
2.45		CORVALLIS		1908, 13
4.4613		CORVALLIS,		1923
4.46434		CORVALLIS		1917, 22, 23
1.254305	PRO	CORVALLIS,		1966
4.4613		CORVALLIS,		1923, 26
1.1643		CORVALLIS, ORE.		1922, 24
4.5213		COTTAGE GROVE		1922, 26, 32

4.4614		COTTAGE GROVE		1925SD, 26
0.41536		COVE		1926
4.4543		COVE		1922, 26
4.45436		COVE		1922
0.5153		COVE		1926
2.46442		CRANE	CQ	1917, 18, 22
2.469		CRANE		1932
7.4543		CRANE		1917
0.4593		CULVER		1922
2.515		DELAKE,		1954
2.64(5/9)		DEPOE BAY	CQ	1961
2.467		DILLARD,		1954
2.64(54/94)		DRAIN		1938
0.466454		DRAIN / ORE		1913pp
2.460005		DRAIN, / OR		1973
4.4274		DUFUR / ORE.		1922, 26, 32, 34
2.4283		DUFUR,		1922, 31
2.46	CON	DUFUR,		1938, 54
2.46	CON	DUNDEE,		1954
2.460005		DUNDEE, / OR		1965
4.4253		DUNDEE / ORE.		1950
2.4293		ECHO,		1917, 26
2.64(5/9)		ELGIN		1954, 62
2.4283		ELGIN,		1937, 38, 42
2.625		EMPIRE		1954
0.5154		ENTERPRISE	CQ	1938
2.4214		ENTERPRISE		1932, 34
2.4564		EUGENE		1913
4.4283		EUGENE,		1922, 23, 26
2.46	CON	FAIRVIEW	CQ	1938
2.4263		FLORENCE		1926, 31, 32, 38
1.4544		FLORENCE,		1938
2.460005		FLORENCE, / OR		1954
4.4543		FOREST GROVE		1926
1.1644		FOREST GROVE, OREG.		1923
4.4193		FOSSIL		1922, 26
2.45		FREEWATER		1914
2.425	CON	FREEWATER,		1922
2.465	CON	FREEWATER,		1934
2.46		GARIBALDI	CQ	1938
2.64(56/65)		GARIBALDI		1938
2.6664		GARIBALDI		1938
4.4274		GARIBALDI / ORE.		1932

2.4564		GASTON		1934, 54, 60, 65
4.4154		GASTON		1926, 30
2.460005		GASTON, / OR		1964
1.425201		GASTON, / ORE.		1922
2.460005		GILCHRIST, / OR		1968
2.415		GLADSTONE		1917
2.460005		GLADSTONE, / OR		1959D
2.65		GLADSTONE		1913
2.64(5/9)		GLADSTONE		1938
2.4263		GOLD BEACH,		1926, 31
2.64(5/9)		GRANTS PASS		1954
4.4543		GRESHAM		1917, 31
4.42531		GRESHAM / ORE.		1922, 26, 31, 37, 38
2.425		GRESHAM,		1917, 22, 24
4.4254		GRESHAM, / ORE.		1922, 26, 32, 34, 36
7.4673	SLR	HAINES		1922, 26, 32, 34, 36, 38, 40
7.4543	DLR	HALFWAY		1917, 26, 36, 38, 53, 54, 65
2.410005	PIC	HALSEY/[ZIP]/OREGON		1966
4.4173		HALSEY		1926
4.4543		HALSEY		1926, 32, 34, 36,38
1.2163	PRO	HARBOR,		1938
2.4664		HARPER		1926
4.4644		HARRISBURG		1938, 45
2.45151		HARRISBURG		1930
4.4154		HARRISBURG		1926
4.4644		HARRISBURG / ORE.		1926, 37
2.455		HELIX,		1926
2.45437		HEPPNER		1917
4.4154		HEPPNER		1923
4.4274		HEPPNER / ORE.		1926, 32
4.4644		HEPPNER		1922, 26, 30, 37, 38, 40
2.467		HEPPNER,		1961
2.460005	CON	HEPPNER, / OR		1979
4.4644		HERMISTON		1936, 40
7.4543	DLR	HERMISTON		1917, 26, 32, 34, 35
2.4263		HILLSBORO	CQ	1926, 37
2.46		HILLSBORO,		1926, 32, 37
2.460005		HILSBORO, / OR		1961
2.46	CON	HINES,		1954
1.4573		HOOD RIVER		1908
2.4214		HOOD RIVER	CQ	1954
2.45		HOOD RIVER,		1914
2.5544		HOOD RIVER		1908

4.4274		HOULTON / ORE.		1925SD, 26
2.465		HUBBARD,		1932
2.4253		INDEPENDENCE		1922, 23, 26, 34
2.461	CON	INDEPENDENCE	CQ	1954
2.4214		INDEPENDENCE,		1932, 38
4.4543		IONE		1917
4.4644		IONE		1938, 40
2.46	CON	IONE,		1954
2.461005		JACKSONVILLE, / OR		1977
2.56		JACKSONVILLE,		1938, 54
2.66(48/78)		JACKSONVILLE	CQ	1938
1.456		JEFFERSON		1954
2.4643		JENNINGS LODGE,		1938
2.669		JOHN DAY		1938
2.46	CON	JOHN DAY,		1938, 54
2.46		JOHN DAY,		1932
2.4263		JOHN DAY,		1922, 26, 31, 38
2.4614		JORDAN VALLEY		1938
2.65		JORDAN VALLEY		1926
4.4514		JORDAN VALLEY		1931
2.46		JOSEPH,		1932
2.4694		JOSEPH		1947A
4.4274		KERBY / ORE.		1932
4.4513		KLAMATH FALLS		1923
4.4614		KLAMATH FALLS		1922, 26, 32
4.5213		KLAMATH FALLS		1917, 26
2.45151		LA GRANDE,		1917, 22
4.46131		LA GRANDE		1932, 38
0.46	CON	LA PINE,		1961
2.425		LAKEVIEW		1922, 26
2.46		LAKEVIEW		1917, 26, 32, 38, 40
2.4263		LAKEVIEW,		1922, 26
2.669		LAKEVIEW		1940
0.4543		LEBANON		1922
2.45		LEBANON,		1915
2.46		LEBANON		1922, 26, 31, 32, 35
2.4263		LEBANON,		1926, 31, 32, 34, 38, 40
2.46	CON	LEBANON,		1959D
2.669		LEBANON		1948
1.4518		LINNTON		1926
4.4154		LINNTON		1917, 22
2.4676		LINNTON,		1932
2.469		LYONS		1938

2.46		MADRAS,		1954
2.466454		MADRAS,		1954
2.46	CON	MAPLETON	CQ	1931D, 54
2.467005		MAPLETON, / OR		1967
2.466454		MARION,		1938
2.45	CON	MARSHFIELD	CQ	1918
4.4513		MARSHFIELD	CQ	1926
4.4613		MARSHFIELD		1917, 26
2.4653		MARYLHURST		1938
2.4573		MARYLHURST,		1938, 54, 58
2.46		MAUPIN,		1938
0.4253		MCMINNVILLE		1922, 26, 32
2.4254	CON	MCMINNVILLE		1922
2.4243		MCMINNVILLE	CQ,SMc	1938
4.4613		MCMINNVILLE	SMc	1922, 26
2.6544		MCMINNVILLE,	SMc	1914
2.46	CON	MEACHAM,		1954
2.415		MEDFORD		1917
2.46		MEDFORD		1916
2.4664		MEDFORD	CQ	1908, 11
4.4153	PRO	MEDFORD		1926
4.4173		MEDFORD		1922, 26, 32
4.4273		MEDFORD		1922, 26, 30, 32
4.45141		MEDFORD		1922, 26
4.4643		MEDFORD,		1922, 23
4.4154		MERLIN		1926
4.4174		MERRILL		1932
2.46		MILL CITY,		1954
2.4293		MILTON,		1926
2.415		MILWAUKIE,		1917, 22
2.455		MILWAUKIE	CQ	1917
2.65003		MILWAUKIE		1917
4.4213		MILWAUKIE,		1922, 26
2.669		MITCHELL		1938
2.4663		MOLALLA,		1938
2.460005		MOLALLA, / OR		1954
2.4263		MONMOUTH	CQ	1926, 30
2.46	CON	MONMOUTH,		1961
2.4663		MONMOUTH		1926
2.64(5/9)		MONMOUTH		1938
2.669		MONMOUTH	CQ	1926, 38
4.42(54/94)		MONMOUTH / ORE.		1922, 26
2.419		MORO	CQ	1926

4.4154		MORO		1923
4.4254		MORO / ORE.		1922
2.46		MORO,		1938
4.4154		MOSIER		1926, 32
2.4214		MOUNT ANGEL		1926, 31, 34
2.66		MOUNT ANGEL		1917, 22, 32, 34
2.4254		MULTNOMAH		1926
2.465		MULTNOMAH,		1926, 32, 40
2.4243		MYRTLE CREEK,		1926, 31, 32, 38
2.460005		MYRTLE CREEK / OR		1972
1.2253	ASA	MYRTLE POINT,		1908
2.4243		MYRTLE POINT,		1926
2.45151		NEHALEM		1954
2.525		NEHALEM,		1926, 29, 32
2.46		NELSCOTT,		1938
4.4253		NEWBERG		1926, 32
4.45441		NEWBERG		1922, 26
4.4543		NEWBERG		1917, 19, 22
4.4614		NEWBERG		1932
2.46		NEWPORT		1917D, 22, 26, 32
2.46		NEWPORT,		1938
2.669		NEWPORT	CQ	1938
4.4154		NEWPORT		1917, 22, 26
4.5213		NORTH PORTLAND		1932
2.4614		NORTH POWDER,		1922, 26, 32, 33, 34, 45
2.5114		NORTH POWDER,		1917
2.65	CON	NORTH POWDER,		1912, 13, 22, 26
2.56		NORTH POWDER	CQ	1954
2.4293		NYSSA,		1938
2.46	CON	NYSSA,		1922
2.64(5/9)		OAK GROVE	CQ	1938
0.4643		OAK GROVE		1938
2.465		OAK GROVE,		1930, 40
2.466254		OAK GROVE,		1954
2.4293		OAKLAND	CQ	1954
2.46		OAKLAND,		1954
2.6694		OAKLAND		1938
7.4573	SLR,PRO	OAKLAND		1922, 26, 32, 38
2.6*5		ONTARIO,		1914
4.4543		ONTARIO,		1923, 26, 32
1.16		ORDNANCE,		1954
2.46		ORDNANCE,		1938
2.46		OREGON CITY,		1958

2.4646		OREGON CITY,	1956, 59
2.55		OREGON CITY	1912
4.4614		OREGON CITY	1926, 32
2.46		OSWEGO,	1954
2.469		OSWEGO,	1926, 28SD
2.460005		PAISLEY, / OR	1967
2.46		PARKDALE	CQ 1922
2.4544		PENDLETON	1914
2.45		PENDLETON	1908
7.4513	SLR	PENDLETON	1922
2.4263		PHILOMATH	1938
2.465		PHILOMATH	1930
2.46		PHILOMATH	1926, 30, 32, 35
2.46	CON	PHILOMATH,	1954
2.46		PHOENIX,	1954
2.45		PILOT ROCK	1951
2.46		PILOT ROCK	CQ 1922
0.4573		PORTLAND	1922
1.4644		PORTLAND	CQ 1921
4.4253		PORTLAND	1917, 18, 19
4.4153		PORTLAND	1917, 17D, 22, 23, 26
4.41534		PORTLAND,	1917
4.4514		PORTLAND	1917D, 22, 23, 26, 27, 28, 30, 30D, 32
4.4614		PORTLAND	1917, 17D, 18, 22, 25SD, 26, 29A, 30A, 30D, 31, 32
4.4613		PORTLAND	1917D, 22, 31D
4.5173		PORTLAND	1914, 16, 17
1.2173		PORTLAND,	1926
4.4514		PORTLAND,	1917D, 22, 23, 25SD, 26
4.451412		PORTLAND,	1917, 17D, 18, 22
4.4543		PORTLAND,	1917, 17D, 18, 22, 23
4.454512		PORTLAND,	1922, 23, 26A, 31
4.4614		PORTLAND,	1917D, 22, 26, 27, 28, 28SD, 31, 32, 42
4.4643		PORTLAND,	1922, 23, 26
4.46434		PORTLAND,	1917, 17D, 18, 19, 22, 23
7.4513	SLR	PORTLAND	1916
2.467005		POWERS, / OR	1966
2.425		PRINEVILLE	CQ 1922
2.4254		PRINEVILLE,	1931, 32, 34
1.115301		PROSPECT,	1923
2.46		PROSPECT,	1954
4.4154		RAINIER	1922
2.4263		RAINIER,	1922, 26, 31
2.4574		RAINIER	CQ 1917

2.46		RAINIER,		1948
2.46		REDMOND		1922, 23, 26
2.4263		REDMOND,		1926, 28SD, 32, 38, 40
2.4653		REDMOND,		1938
2.425		REEDSPORT		1926
2.46	CON	RIDDLE,		1954
2.467005		RIDDLE, / OR		1962
2.460005		ROCKAWAY, / OR		1971
1.25		ROCKVILLE,		1926
2.46	CON	ROGUE RIVER	CQ	1954
2.4653		ROGUE RIVER		1938
2.460005		ROSEBURG, / OR		1968
4.4614		ROSEBURG		1922, 26, 32
4.4113		ROSEBURG,		1917, 22, 23, 26
4.4543		ROSEBURG		1917D, 22
7.4543		SAINT BENEDICT		1922, 23, 26, 31D, 32, 36, 37, 38, 40, 59D
2.56		SAINT BENEDICT,		1954
2.4243		SAINT HELENS		1926, 38
2.4214		SAINT HELENS,		1922, 26, 31, 32, 33
2.425		SAINT HELENS		1922
2.461		SAINT HELENS,		1954
4.4253		SALEM	eSE	1917D, 22, 26, 30, 30D, 32,37
4.42736		SALEM		1923, 26, 31, 32
4.4253		SALEM,		1917D, 22, 23, 26, 31D, 32
0.4254		SALEM,		1922
4.45		SALEM,		1916SE
4.4544		SALEM,		1917D, 22, 23, 26
0.45441		SALEM,		1931
4.4644		SALEM,		1921
4.4673		SALEM,		1922, 23
2.469		SANDY	CQ	1926
2.4263		SCAPPOOSE		1930
2.46	CON	SCAPPOOSE,		1938
2.4654		SCAPPOOSE	CQ	1926, 31
2.625		SCAPPOOSE	CQ	1938, 54
2.66		SCAPPOOSE		1922
2.461		SCAPPOOSE,		1954, 61
2.469		SCIO		1940
2.460005		SCOTTS MILLS, / OR		1984
2.4574		SEASIDE,		1914
2.6*5(94/44)		SEASIDE		1917
2.46		SEASIDE,		1954
2.46632		SEASIDE,		1954

2.460005		SEASIDE, / OR		1965
2.460005		SHADY COVE,		1977
0.4663		SHERIDAN	CQ	1922
2.669		SHERIDAN		1938, 43
4.4154		SHERIDAN		1932
2.4263		SHERIDAN,		1926, 37, 38
2.46		SHERIDAN,		1926, 32, 34, 38
2.46	CON	SHERIDAN	CQ	1954
2.460005	CON	SHERIDAN, / OR		1981
4.4544		SHERWOOD		1938
4.4644		SHERWOOD		1940
2.45		SILVERTON		1912
4.4153		SILVERTON	CQ	1922, 26, 31, 32
4.4543		SILVERTON	CQ	1917
2.425		SPRINGFIELD	CQ	1926, 32
2.4544		SPRINGFIELD		1914
2.65		SPRINGFIELD		1912
2.4243		SPRINGFIELD,		1926, 37, 38
2.46		SPRINGFIELD, / OR		1954
2.460005		SPRINGFIELD, / OR		1968
2.45		STANFIELD,		1922, 32
2.46	CON	STANFIELD,		1925
2.467005		STAYTON, / OR		1954
2.4564		SUMPTER		1914
4.42		SUTHERLIN / ORE.		1926
2.46		SUTHERLIN,		1922, 26, 30
2.45(5/9)		SWEET HOME	CQ	1938
2.56		SWEET HOME	CQ	1938
4.4274		TALENT / ORE.		1926, 28SD, 34, 36, 37
4.4274		TANGENT / ORE.		1926
2.64(5/9)		TERREBONNE		1938
2.467005		TERREBONNE, / OR		1962
1.4514		THE DALLES		1917
2.4544		THE DALLES	CQ	1911
4.4643		THE DALLES		1921, 22
4.4213		THE DALLES,		1925SD, 26
4.4513	PRO	THE DALLES,		1917, 22, 23, 26
2.46	CON	TILLER,		1954
2.4283		TOLEDO,		1922, 31, 31D, 32, 37
2.46		TOLEDO,		1926
4.4154		TROUTDALE		1919, 37
2.469		TURNER		1938
2.467		TURNER,		1954

2.46(75/45)05		TURNER / OR	CQ	1963
2.56	CON	TYGH VALLEY,		1954
2.46		UMATILLA	CQ	1922
2.460005		UMATILLA, / OR		1967
0.5153		UNION		1917D, 26
2.429		UNION		1926, 38
2.4653		UNION,		1938
2.46	CON	UNION,		1938, 54
2.4564		VALE		1912
2.46002		VALE		1917, 22
4.46632		VALE,		1940, 43
2.4664		VALE		1938, 40
0.427		VALE,		1932
1.15		VALE,		1971
2.46		VALE,		1954
2.46	CON	VALE,		1954
2.460005		VALE, / OR		1959D, 68
4.4514		VERNONIA		1922, 26
2.46	CON	WALDPORT,		1954
2.46		WALDPORT,		1918, 23
2.46		WALLOWA,		1926, 30, 32
1.2644		WALLOWA, ORE.		1926, 38
2.46	CON	WARREN,		1961
2.4664		WASCO	CQ	1926
2.46	CON	WASCO,		1954
2.4669		WAUNA,		1937, 38, 58
2.425		WENDLING	CQ	1922
1.46		WEST LINN,		1938
2.669		WEST LINN		1938
1.5163		WESTON,		1938
2.68(9/5)		WESTPORT	CQ	1940
2.46	CON	WHEELER,		1954
2.6694		WHEELER		1938
2.46	CON	WILLAMINA,		1954
2.4663		WILLAMINA,		1938
2.6694		WINSTON		1938, 54
2.46	CON	WINSTON,		1954
2.460005		WINSTON, / OR		1959D
2.465		WOODBURN		1917, 22, 32, 34
2.669		WOODBURN		1938, 40
2.46		WOODBURN,		1922, 26, 34, 37
1.46626		WOODBURN, / ORE.		1917
2.46		YAMHILL	CQ	1938

2.469	YAMHILL	1931D
1.227	YAMHILL,	1922, 23
1.4544	YAMHILL,	1926
1.4644	YAMHILL,	1922, 26